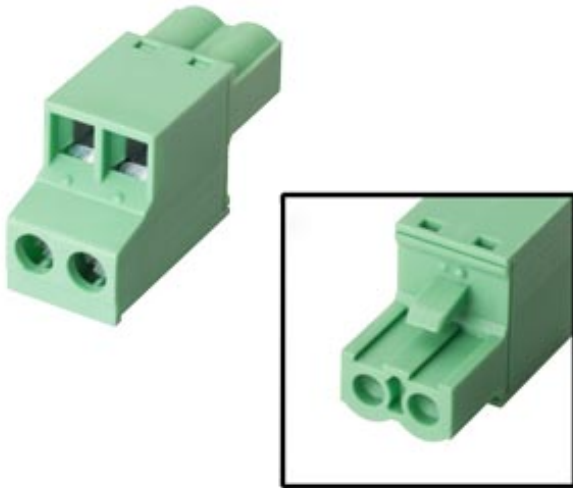


Female connector, 2-pin, type 1 2-pin connector, female Grid size 5.08 mm Further information, Quantity and content: see technical data Quantity: see technical data



| General information | |
|--|---|
| Product type designation | Connector, female, 2-pin, type 1 |
| Control elements | |
| Frame size/design | |
| <ul style="list-style-type: none"> Standard | Yes; Z shape |
| Installation type/mounting | |
| Wall mounting/direct mounting | Yes; can be plugged into SIMATIC HMI device |
| Supply voltage | |
| Rated value (DC) | 24 V |
| Interfaces | |
| HMI-side interface | |
| <ul style="list-style-type: none"> Number of pins HMI-side | 2; Male |
| Device-side interface | |
| <ul style="list-style-type: none"> Number of pins device-side | 2; Female, screw terminals |
| Standards, approvals, certificates | |
| RoHS conformity | Yes |
| China RoHS compliance | Yes |

| Use in hazardous areas | |
|------------------------------------|---|
| • ATEX Zone 2 | Yes; Device-dependent, see operating instructions |
| • ATEX Zone 22 | Yes; Device-dependent, see operating instructions |
| • IECEx Zone 2 | Yes; Device-dependent, see operating instructions |
| • IECEx Zone 22 | Yes; Device-dependent, see operating instructions |
| • cULus Class I Zone 1 | Yes; Device-dependent, see operating instructions |
| • cULus Class I Zone 2, Division 2 | Yes; Device-dependent, see operating instructions |
| • FM Class I Division 2 | Yes; Device-dependent, see operating instructions |

| Ambient conditions | |
|---|--------|
| Ambient temperature during operation | |
| • min. | 0 °C |
| • max. | 55 °C |
| Ambient temperature during storage/transportation | |
| • min. | -20 °C |
| • max. | 70 °C |
| Relative humidity | |
| • Operation, max. | 95 % |

| Mechanics/material | |
|----------------------------|------------------------------|
| Material | |
| • Plastic | Yes; green |
| Enclosure material (front) | |
| • Plastic | Yes; Contact spacing 5.08 mm |
| Screw type | |
| • 4.5 V | Yes; Screw terminals |

| Dimensions | |
|------------|-------|
| Width | 10 mm |
| Height | 15 mm |
| Thickness | 27 mm |

| Scope of supply | |
|-----------------------------|----|
| Delivery quantity in pieces | 10 |

| Other | |
|------------------------|---|
| Merchandise | Yes |
| Manufacturer name | SIEMENS AG |
| Manufacturer's address | Gleiwitzerstraße 555, 90475 Nuremberg, Germany |
| Target devices | for Comfort Panel, IPC, Flat Panel, Thin Client |

| Usable in the following products | |
|----------------------------------|------------|
| • Product 2 | 6AV2128-3* |
| • Product 3 | 6AV2124-* |
| • Product 4 | 6AV2123-2* |
| • Product 5 | 6AV6545-4* |

- Product 6
- Product 7

last modified:

6AV6545-8*

6AV6647-*

05/13/2020