

# ADAM-5013

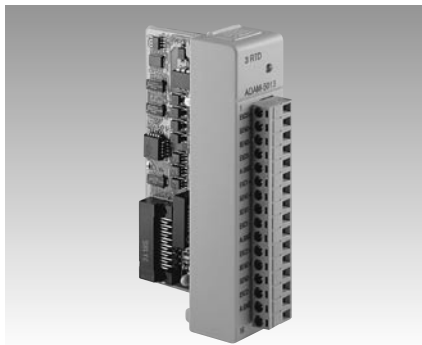
# ADAM-5017

# ADAM-5017H

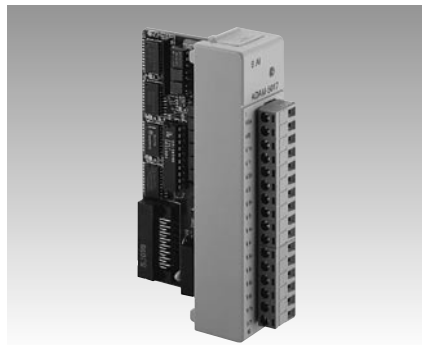
## 3-channel RTD Input Module

## 8-channel Analog Input Module

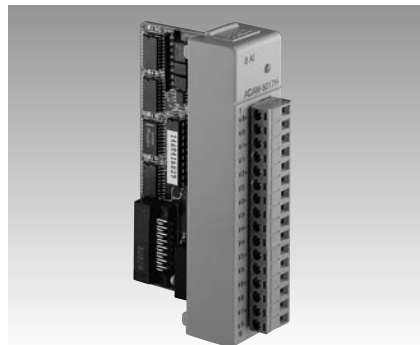
## 8-channel High-Speed Analog Input Module



ADAM-5013



ADAM-5017



ADAM-5017H



### Specifications

- **Channels** 3
- **Effective Resolution** 16-bit
- **Input Type** PT100 or Ni RTD
- **RTD Types and Temperature Ranges**
  - IEC RTD 100 ohms**
  - Pt -100° C to +100° C a=0.00385
  - Pt 0° C to +100° C a=0.00385
  - Pt 0° C to +200° C a=0.00385
  - Pt 0° C to +600° C a=0.00385
  - JIS RTD 100 ohms**
  - Pt -100° C to +100° C a=0.00392
  - Pt 0° C to +100° C a=0.00392
  - Pt 0° C to +200° C a=0.00392
  - Pt 0° C to +600° C a=0.00392
  - Ni RTD**
  - Ni -80° C to +100° C
  - Ni 0° C to +100° C
- **Isolation Voltage** 3000 V<sub>DC</sub>
- **Sampling Rate** 10 samples/sec. (total)
- **Input Impedance** 2 MΩ
- **Bandwidth** 13.1 Hz @ 50 Hz, 15.72 Hz @ 60 Hz
- **Input Connections** 2, 3 or 4 wire
- **Accuracy** ±0.1% or better
- **Zero Drift** ±0.015° C/° C
- **Span Drift** ±0.01° C/° C
- **CMR @ 50/60 Hz** 150 dB
- **NMR @ 50/60 Hz** 100 dB
- **Power Consumption** 0.85 W (typical); 1.1 W (max.)

### Ordering Information

- **ADAM-5013-A1** 3-channel RTD Input Module

### Specifications

- **Channels** 8 differential
- **Effective Resolution** 16-bit
- **Input Type** mV, V, mA
- **Input Range** ±150 mV, ±500 mV, ±1 V, ±5 V, ±10 V; ±20 mA
- **Isolation Voltage** 3000 V<sub>DC</sub>
- **Fault and Overvoltage Protection** Withstands overvoltage up to ±35 V
- **Sampling Rate** 10 samples/sec. (total)
- **Input Impedance** 2 MΩ
- **Bandwidth** 13.1 Hz @ 50 Hz, 15.72 Hz @ 60 Hz
- **Accuracy** ±0.1% or better
- **Zero Drift** ±1.5 mV/° C
- **Span Drift** ±25 PPM/° C
- **CMR @ 50/60 Hz** 92 dB min.
- **Power Consumption** 1 W (typical); 1.25 W (max.)
- **Analog Signal Range** ±15 V max.

**Note:** The voltage difference between any two pins must not exceed ±15 V

### Ordering Information

- **ADAM-5017** 8-channel Analog Input Module - mV, V, mA

### Specifications

- **Channels** 8 differential
- **Effective Resolution** 12-bit plus sign bit
- **Input Type** mV, V, mA
- **Input Range** ±250 mV, ±500 mV, ±1 V, ±5 V, ±10 V, 0 ~ +500 mV, 0 ~ +1 V, 0 ~ +5 V, 0 ~ +10 V, 0 ~ 20 mA, 4 ~ 20 mA
- **Isolation Voltage** 3000 V<sub>DC</sub>
- **Sampling Rate** Depends on base unit
  - ADAM-5000/485 & 5000E:** 100 samples/sec
  - ADAM-5510:** 8000 samples/sec max.: one ADAM-5017H installed
  - ADAM-5510KW:** Up to 100 samples/sec
  - ADAM-5511:** Up to 100 samples/sec
  - ADAM-5000/TCP:** 1000 samples/sec max.: depending on the performance of client server or controller
- **Input Impedance** 20 MΩ (voltage inputs) 125 Ω (current inputs)
- **Bandwidth** 1 kHz
- **Signal Input Bandwidth** 1 kHz for both voltage and current inputs
- **Accuracy** ±0.1% or better
- **CMR @ 50/60 Hz** 92 dB min
- **Power Consumption** 1.75 W (typical); 2.2 W (max)
- **Distinct Range Settings Allowed on Each Channel**

**Note:** The voltage difference between any two pins must not exceed ±15 V

### Ordering Information

- **ADAM-5017H** 8-channel High-Speed Analog Input Module - mV, V, mA